

FORTEX

Pedicle Screw System®

*Simplicity
Reinvented*



 X-spine
X-treme Innovations

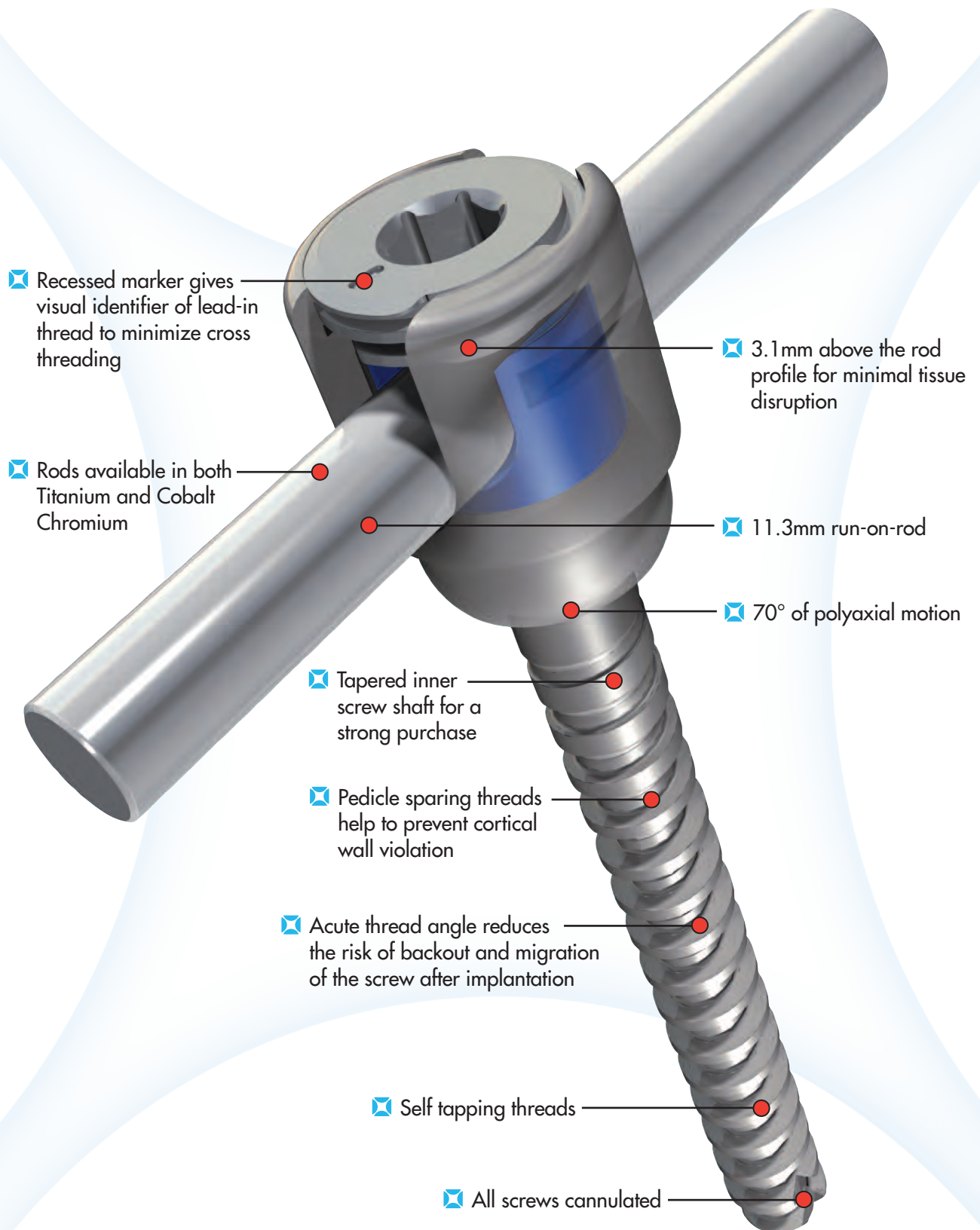
Distribuidor exclusivo em Portugal:

yourspine 



FORTEX[®]

Pedicle Screw System



FORTEX[®]

Pedicle Screw System

1

Align Cap to Screw Head

2

Align Recessed Marker on Cap
with Lead-in Thread on Screw Head

3

Rotate Cap into Screw Head
to Lock onto Rod

❑ Conical shape cap provides
multiple point fixation to rod



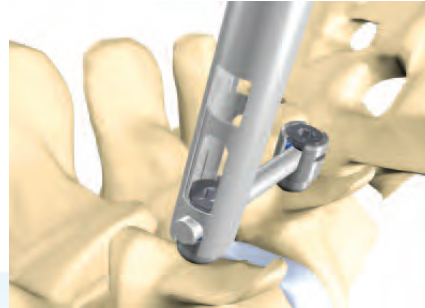
 X-spineSM
X-treme Innovations

Rod Reduction Options



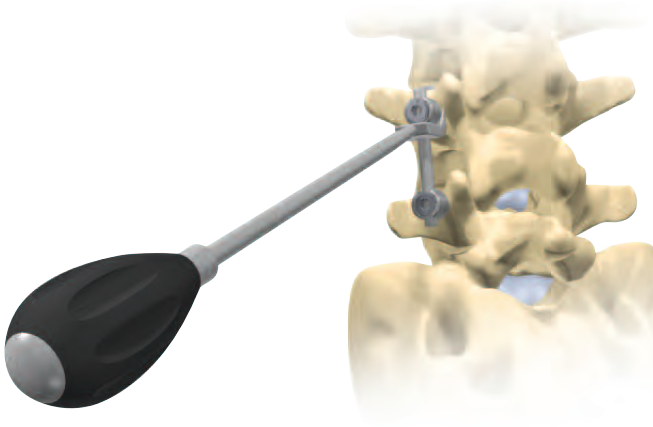
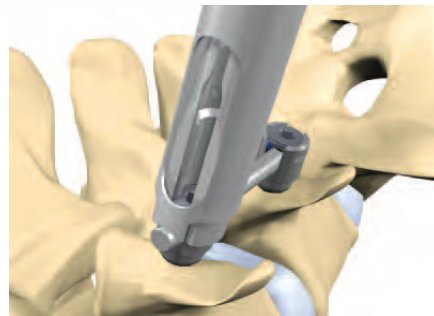
❑ Pistol Grip Reducer

The Pistol Grip Reducer Instrument can be used to perform rod reduction into the screw.



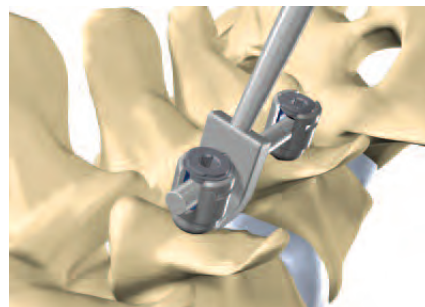
❑ Persuader

The Threaded Persuader Instrument can be used for the reduction of spondylolisthesis.



❑ Rod Fork

A Rod Fork is provided to reduce the rod in place if required. The Rod Fork jaws engage the screw and the Rod Fork is rocked to achieve rod reduction.



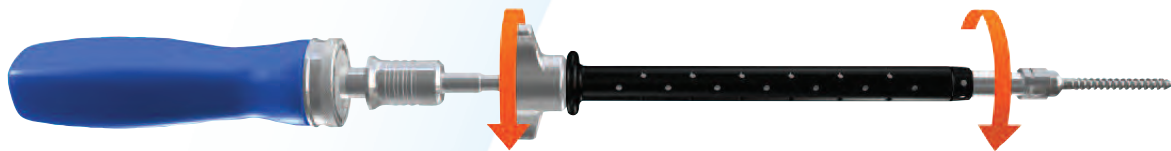
Fortex Pedicle Screw Driver



- ❑ The Fortex Pedicle Screw Driver consists of two components: the Inner Locking Sleeve for screw engagement and the Outer Sleeve for surgeon grip.

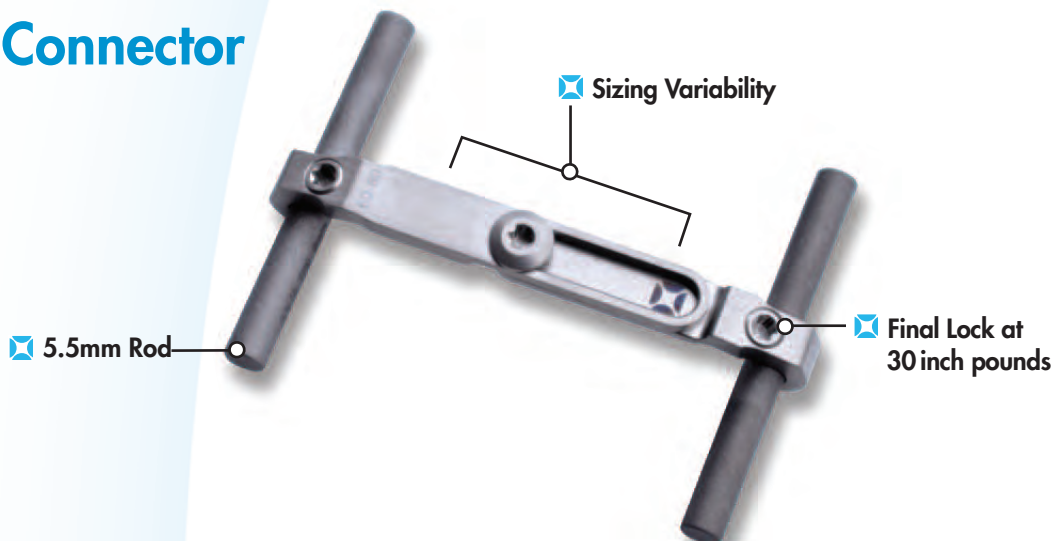


- ❑ The screw is secured to the Fortex Pedicle Screw Driver by lowering the Inner Locking Sleeve and aligning the hex couplings for engagement.



- ❑ The Inner Locking Sleeve is rotated clockwise by hand until increasing resistance is felt.

Cross Connector



Fortex Pedicle Screws and Cap

Item #	Description
X022-0080	Fortex, 4.75 x 30 Cannulated Screw
X022-0081	Fortex, 4.75 x 35 Cannulated Screw
X022-0082	Fortex, 4.75 x 40 Cannulated Screw
X022-0083	Fortex, 4.75 x 45 Cannulated Screw
X022-0084	Fortex, 4.75 x 50 Cannulated Screw
X022-0085	Fortex, 4.75 x 55 Cannulated Screw
X022-0086	Fortex, 5.5 x 30 Cannulated Screw
X022-0087	Fortex, 5.5 x 35 Cannulated Screw
X022-0088	Fortex, 5.5 x 40 Cannulated Screw
X022-0089	Fortex, 5.5 x 45 Cannulated Screw
X022-0090	Fortex, 5.5 x 50 Cannulated Screw
X022-0091	Fortex, 5.5 x 55 Cannulated Screw
X022-0092	Fortex, 6.5 x 30 Cannulated Screw
X022-0093	Fortex, 6.5 x 35 Cannulated Screw
X022-0094	Fortex, 6.5 x 40 Cannulated Screw
X022-0095	Fortex, 6.5 x 45 Cannulated Screw
X022-0096	Fortex, 6.5 x 50 Cannulated Screw
X022-0097	Fortex, 6.5 x 55 Cannulated Screw
X022-0098	Fortex, 7.5 x 30 Cannulated Screw
X022-0099	Fortex, 7.5 x 35 Cannulated Screw
X022-0100	Fortex, 7.5 x 40 Cannulated Screw
X022-0101	Fortex, 7.5 x 45 Cannulated Screw
X022-0102	Fortex, 7.5 x 50 Cannulated Screw
X022-0103	Fortex, 7.5 x 55 Cannulated Screw
X022-0104	Fortex, 8.25 x 30 Cannulated Screw
X022-0105	Fortex, 8.25 x 35 Cannulated Screw
X022-0106	Fortex, 8.25 x 40 Cannulated Screw
X022-0107	Fortex, 8.25 x 45 Cannulated Screw
X022-0108	Fortex, 8.25 x 50 Cannulated Screw
X022-0109	Fortex, 8.25 x 55 Cannulated Screw
X022-0042	Fortex Cap

Fortex Rods

Item #	Description
N60001073	35mm Straight Rod
N60000300	40mm Straight Rod
N60001074	45mm Straight Rod
N60001075	50mm Straight Rod
N60001076	55mm Straight Rod
N60000301	60mm Straight Rod
N60001077	65mm Straight Rod
N60001060	70mm Straight Rod
N60000302	80mm Straight Rod
N60001080	90mm Straight Rod
N60000303	100mm Straight Rod
N60000304	120mm Straight Rod
N60000307	180mm Straight Rod
N60000309	300mm Straight Rod
X077-0420	5.5mm Cobalt Chromium Straight Rod, 500mm
N60001091	35mm Continuous Radius Rod
N60001092	40mm Continuous Radius Rod
N60001093	45mm Continuous Radius Rod
N60001068	50mm Continuous Radius Rod
N60001069	60mm Continuous Radius Rod
N60001070	70mm Continuous Radius Rod
N60001071	80mm Continuous Radius Rod
N60001098	90mm Continuous Radius Rod
N60001072	100mm Continuous Radius Rod

Fortex Cross Connectors

Item #	Description
X070-0010	35 - 45mm Cross Bar Connector
X070-0011	45 - 60mm Cross Bar Connector
X070-0012	60 - 80mm Cross Bar Connector

INDICATIONS: See Package Insert for a more complete listing of indications, contraindications, warnings, precautions, and other important information.

LIMITED WARRANTY and DISCLAIMER: X-spine products have a limited warranty against defects and workmanship and materials. Any other express or implied warranties, including warranties of merchantability or fitness, are disclaimed.

WARNING: In the USA, this product has labeling limitations. See package insert for complete information.

CAUTION: USA Law restricts these devices to sale by or on the order of a physician.

X-spineSM the X-spine logo and FORTEX[®] are trademarks or servicemarks of X-spine Systems, Inc.

Products Patented and Patents Pending.

All products are not currently available in all markets.

© 2013 X-spine Systems, Inc., All rights reserved.



X-spine Systems, Inc.

452 Alexandersville Rd., Miamisburg, OH 45342

Phone: 800-903-0640 • Direct: 937-847-8400 • Fax: 937-847-8410

www.x-spine.com

F-1000.12 Rev B 6/13 I2M/CI

EC 60-1415

CE 0088

